

B-Pan Transitions

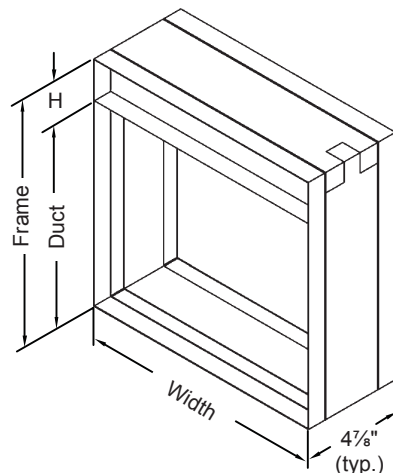
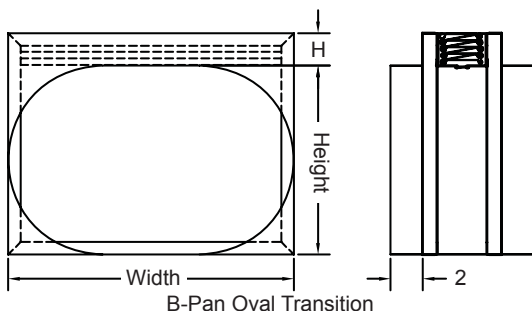
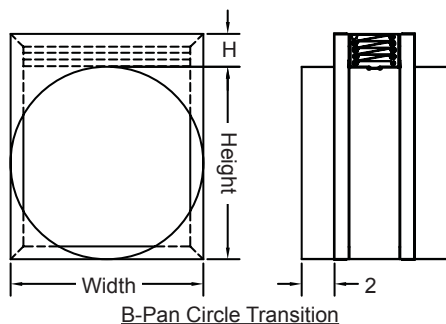
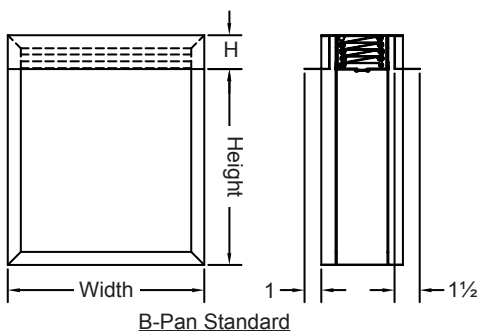
Fire Damper • Models: 17S, 17D, 38S, 38D

APPLICATION

The B-Pan transition allows the blades to be out of air stream. The B-Pan transition also used for dampers less than the minimum frame size.

PANEL SIZE LIMITATIONS

Orientation	Horizontal			Vertical			
	Panel	Minimum Panel	Maximum Single Section	Maximum Assembly	Minimum Panel	Maximum Single Section	Maximum Assembly
Model	17SB	4"W x 3"H (duct) (4"W x 5"H frame)	48"W x 43"H (duct) (48"W x 48"H frame)	102"W x 48"H (duct) (102"W x 48"H frame) (36"W x 43"H section duct)	4"W x 3"H (duct) (4"W x 5"H frame)	60"W x 55"H (duct) (60"W x 60"H frame)	120"W x 115"H (duct) (120"W x 120"H frame) (40"W x 60"H section duct)
	38SB	4"W x 3"H (duct) (4"W x 5"H frame)	48"W x 43"H (duct) (48"W x 48"H frame)	72"W x 32"H (duct) (72"W x 36"H frame) (36"W x 32"H section duct)	4"W x 3"H (duct) (4"W x 5"H frame)	36"W x 32"H (duct) (36"W x 36"H frame)	72"W x 68"H (duct) (72"W x 72"H frame) (36"W x 32"H section duct)
	D17B	4"W x 3"H (duct) (4"W x 5"H frame)	24"W x 21"H (duct) (24"W x 24"H frame)	not available	4"W x 3"H (duct) (4"W x 5"H frame)	36"W x 32"H (duct) (36"W x 36"H frame)	72"W x 32"H (duct) (72"W x 36"H frame) (18"W x 32"H section duct)
	D38B	4"W x 3"H (duct) (4"W x 5"H frame)	24"W x 21"H (duct) (24"W x 24"H frame)	not available	4"W x 3"H (duct) (4"W x 5"H frame)	36"W x 32"H (duct) (36"W x 36"H frame)	72"W x 32"H (duct) (72"W x 36"H frame) (18"W x 32"H section duct)



Duct Height	Head Height "H"
3" - 18"	2"
19" - 28"	3"
29" - 40"	4"
41" - 55"	5"
56" - 57"	3"
58" - 84"	4"
85" - 115"	5"



B-Pan Transitions

Fire Damper • Models: 17S, 17D, 38S, 38D

17S Free Area

Duct Height	Duct Width														
	4	8	12	16	20	24	28	32	36	40	44	48	52	56	60
4	.06	.2	.3	.4	.5	.5	.6	.7	.8	.9	1.0	1.1	1.2	1.3	1.4
8	.2	.4	.6	.8	1.0	1.2	1.4	1.6	1.8	2.0	2.2	2.4	2.5	2.8	3.0
12	.2	.5	.9	1.2	1.5	1.8	2.1	2.4	2.7	3.0	3.4	3.7	4.0	4.3	4.6
16	.3	.7	1.2	1.6	2.0	2.4	2.8	3.3	3.7	4.1	4.5	5.0	5.4	5.8	6.2
20	.4	.9	1.4	2.0	2.5	3.0	3.6	4.1	4.7	5.2	5.7	6.3	6.8	7.3	7.9
24	.4	1.1	1.7	2.4	3.0	3.7	4.3	5.0	5.6	6.3	6.9	7.5	8.2	8.8	9.5
28	.5	1.2	2.0	2.8	3.5	4.3	5.0	5.8	6.5	7.3	8.0	8.8	9.5	10.3	11.0
32	.6	1.5	2.3	3.2	4.0	4.9	5.8	6.7	7.5	8.4	9.3	10.1	11.0	11.9	12.7
36	.7	1.6	2.6	3.6	4.6	5.5	6.5	7.5	8.5	9.5	10.4	11.4	12.4	13.4	14.4
40	.7	1.8	2.9	4.0	5.1	6.2	7.3	8.4	9.4	10.5	11.6	12.7	13.8	14.9	16.0
44	.8	2.0	3.2	4.4	5.6	6.8	8.0	9.2	10.4	11.6	12.8	14.0	15.2	16.4	17.6
48	.8	2.1	3.3	4.6	5.9	7.1	8.4	9.6	10.9	12.1	13.4	14.7	15.9	17.2	18.4
52	.9	2.4	3.8	5.2	6.6	8.0	9.5	10.9	12.3	13.7	15.2	16.6	18.0	19.4	20.9
55	.9	2.4	3.9	5.3	6.8	8.3	9.8	11.3	12.8	14.3	15.8	17.3	18.8	20.3	21.8

17D Free Area

Duct Height	Duct Width							
	8	12	16	20	24	28	32	36
8	.4	.6	.8	1.0	1.2	1.4	1.6	1.8
12	.5	.9	1.2	1.5	1.8	2.1	2.4	2.7
16	.7	1.2	1.6	2.0	2.4	2.8	3.3	3.7
20	.9	1.4	2.0	2.5	3.0	3.6	4.1	4.7
24	1.1	1.7	2.4	3.0	3.7	4.3	5.0	5.6
28	1.2	2.0	2.8	3.5	4.3	5.0	5.8	6.5
32	1.5	2.3	3.2	4.0	4.9	5.8	6.7	7.5

38D Free Area

Duct Height	Duct Width							
	8	12	16	20	24	28	32	36
8	.27	.44	.62	.79	.97	1.1	1.3	1.5
12	.44	.73	1.0	1.3	1.6	1.9	2.1	2.4
16	.62	1.1	1.4	1.8	2.2	2.6	3.0	3.4
20	.79	1.3	1.8	2.3	2.8	3.3	3.8	4.3
24	.97	1.6	2.2	2.8	3.4	4.1	4.7	5.3
28	1.1	1.9	2.6	3.3	4.1	4.8	5.5	6.2
32	1.3	2.1	3.0	3.8	4.7	5.5	6.3	7.2

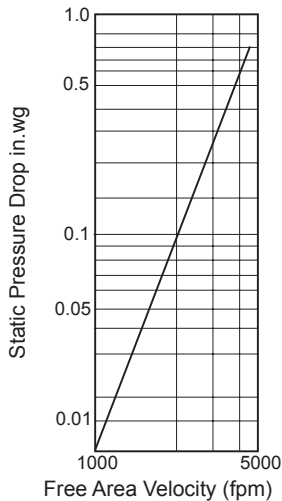
38S Free Area (Vertical Mount)

Duct Height	Duct Width											
	4	8	12	16	20	24	28	32	36	40	44	47
4	.04	.09	.16	.22	.29	.35	.41	.47	.54	.58	.64	.70
8	.09	.27	.44	.62	.79	.97	1.1	1.3	1.5	1.6	1.8	1.9
12	.16	.44	.73	1.0	1.3	1.6	1.9	2.1	2.4	2.6	2.9	3.2
16	.22	.62	1.0	1.4	1.8	2.2	2.6	3.0	3.4	3.7	4.1	4.4
20	.29	.79	1.3	1.8	2.3	2.8	3.3	3.8	4.3	4.7	5.2	5.7
24	.35	.97	1.6	2.2	2.8	3.4	4.1	4.7	5.3	5.8	6.4	6.9
28	.41	1.1	1.9	2.6	3.3	4.1	4.8	5.5	6.2	6.8	7.5	8.2
32	.47	1.3	2.1	3.0	3.8	4.7	5.5	6.3	7.2	7.8	8.7	9.4
36	.51	1.4	2.3	3.2	4.2	5.0	5.9	6.8	7.7	8.6	9.4	10.2
40	.58	1.6	2.6	3.6	4.6	5.7	6.6	7.7	8.7	9.5	10.5	11.4
42	.61	1.7	2.8	3.8	5.0	6.1	7.2	8.3	9.3	10.2	11.3	12.3

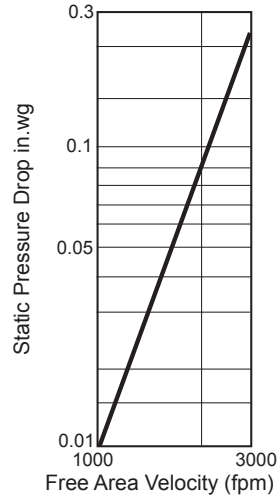
38S Free Area (Horizontal Mount)

Duct Height	Duct Width											
	4	8	12	16	20	24	28	32	36	40	44	48
4	.06	.2	.3	.4	.5	.5	.6	.7	.8	.9	1.0	1.1
8	.2	.4	.6	.8	1.0	1.2	1.4	1.6	1.8	2.0	2.2	2.4
12	.2	.5	.9	1.2	1.5	1.8	2.1	2.4	2.7	3.0	3.4	3.7
16	.3	.7	1.2	1.6	2.0	2.4	2.8	3.3	3.7	4.1	4.5	5.0
20	.4	.9	1.4	2.0	2.5	3.0	3.6	4.1	4.7	5.2	5.7	6.3
24	.4	1.1	1.7	2.4	3.0	3.7	4.3	5.0	5.6	6.3	6.9	7.5
28	.5	1.2	2.0	2.8	3.5	4.3	5.0	5.8	6.5	7.3	8.0	8.8
32	.6	1.5	2.3	3.2	4.0	4.9	5.8	6.7	7.5	8.4	9.3	10.1
36	.7	1.6	2.6	3.6	4.6	5.5	6.5	7.5	8.5	9.5	10.4	11.4
40	.7	1.8	2.9	4.0	5.1	6.2	7.3	8.4	9.4	10.5	11.6	12.7
43	.7	1.9	3.0	4.1	5.3	6.5	7.6	8.8	9.9	11.1	12.3	13.4

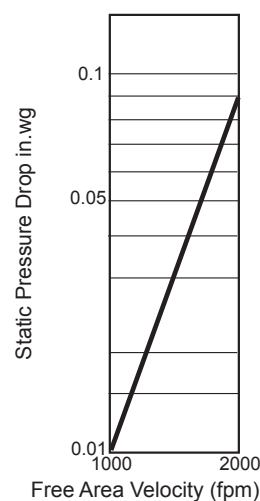
17SB Pressure Drop



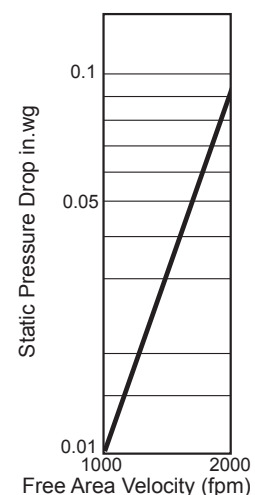
38SB Pressure Drop



17DB Pressure Drop



38DB Pressure Drop



In the interest of product development, Louvers & Dampers reserves the right to make changes without notice.