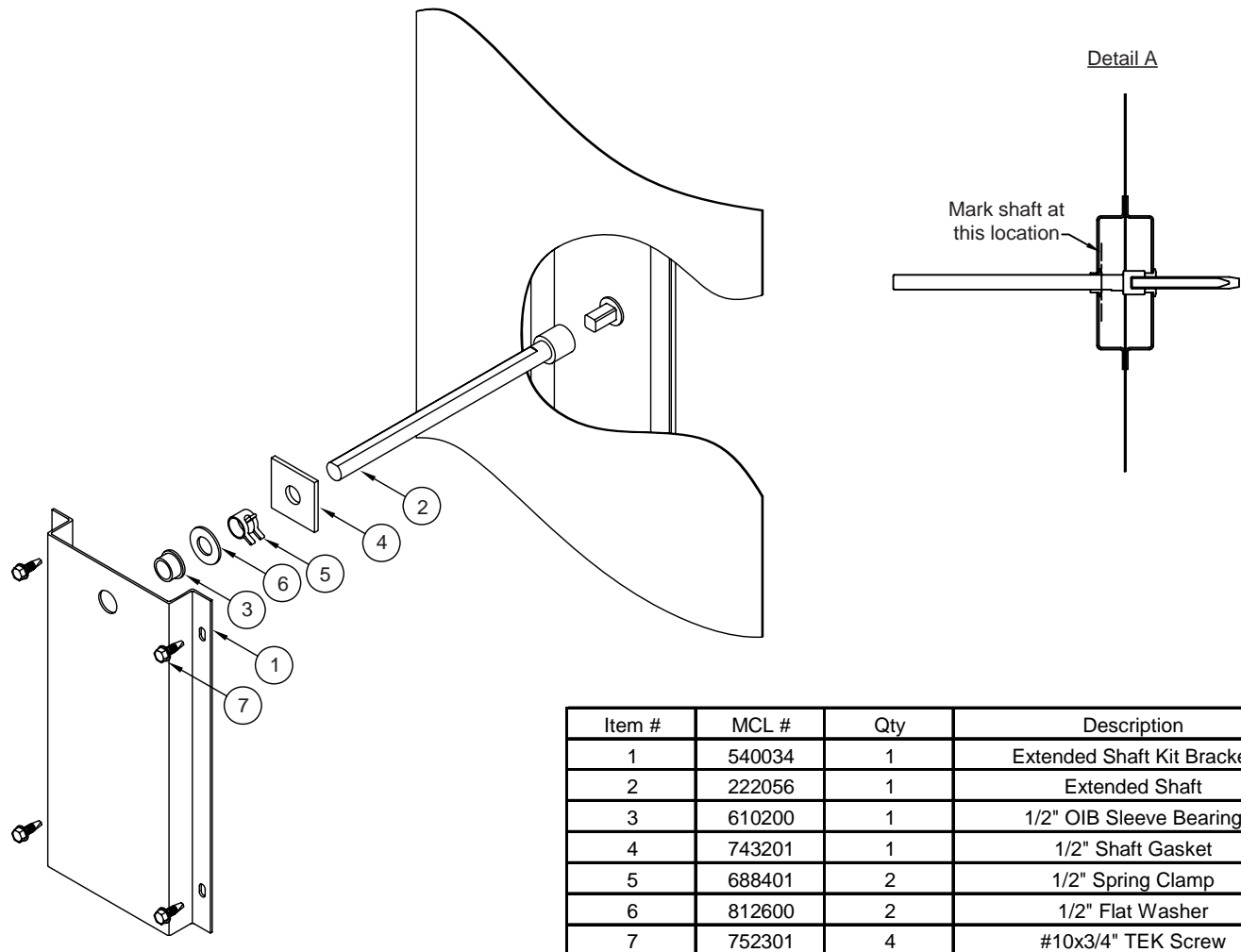


## Extended Shaft Kit



Item #	MCL #	Qty	Description
1	540034	1	Extended Shaft Kit Bracket
2	222056	1	Extended Shaft
3	610200	1	1/2" OIB Sleeve Bearing
4	743201	1	1/2" Shaft Gasket
5	688401	2	1/2" Spring Clamp
6	812600	2	1/2" Flat Washer
7	752301	4	#10x3/4" TEK Screw

### INSTALLATION

1. If damper is installed in sleeve or duct, drill clearance hole for extended shaft so that it can be attached to the drive axle.
2. Insert the bearing (Item 3) into the hole in the bracket (Item 1), so that it is oriented as shown.
3. Slide the extended shaft (Item 2) through the bearing/bracket assembly, so that it is oriented as shown.
4. Temporarily attach the extended shaft onto the drive blade axle, so that the entire assembly is properly seated. Mark the drive shaft where the shaft rests against the bracket. (Reference Detail A.)
5. Remove the bracket assembly and apply the shaft gasket (Item 4), spring clamp(s) (Item 5), and spacer washer(s) (Item 6) as needed between the plug-on head and the mark, so that the plug-on axle is trapped once the assembly is complete.
6. Attach the assembly using the screws (Item 7) through the bracket.

\*Note: The flat on the plug-on drive shaft should be oriented so it is parallel to the blade for damper closure reference. Rotate the extended shaft to ensure free rotation. If binding occurs, loosen the mounting screw, adjust the location of the assembly, and retighten the mounting screws. Repeat this process until the extended shaft rotates freely.

## Extended Shaft Kit

---

This page intentionally left blank.