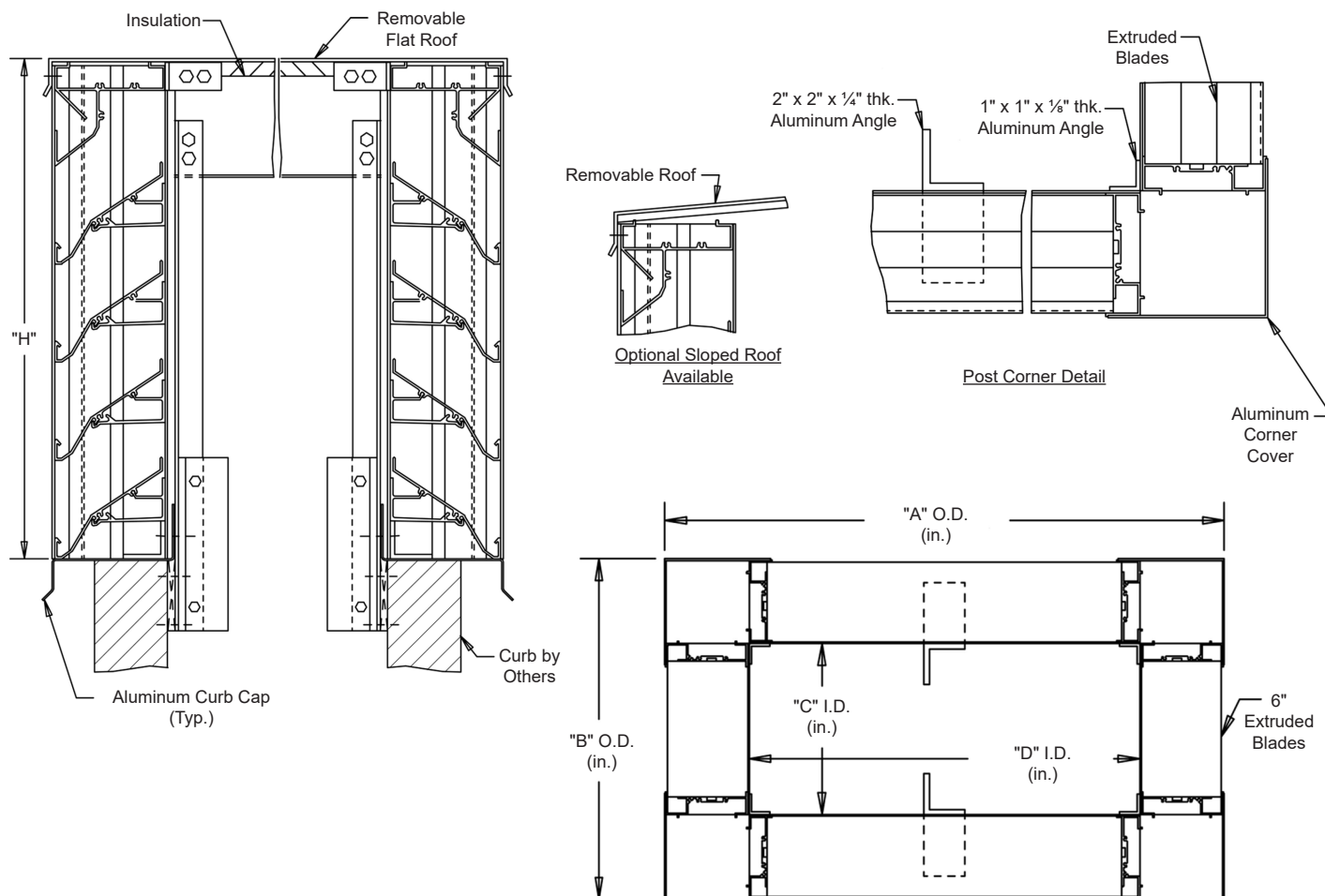


**Interior Fastening Installation****ANGLES** - All corners and intermediate to extend from roof into curb.

Continuous angle at the four corners and intermediate as required.

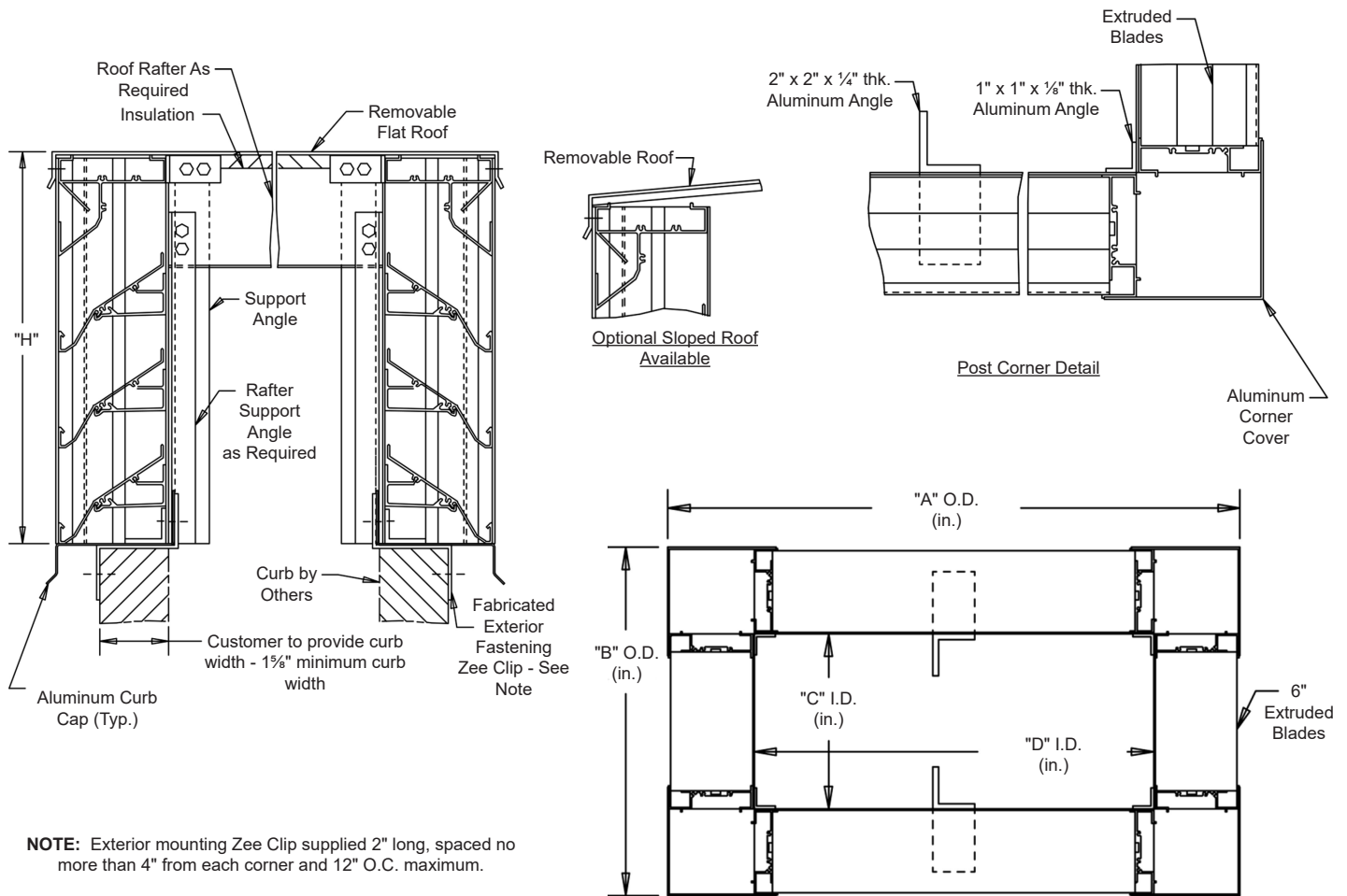
**SPECIFICATIONS****MATERIAL:** .081" thick (nominal) or .125" thick (nominal) extruded aluminum, 6063-T52/T6 alloy, with reinforcing rib bosses.**ROOF:** .060" thick (nominal) sheet aluminum removable roof, reinforced with aluminum bracing where required to take a snow load of 40 lbs./sq.ft., plus a required safety factor.**SCREENS:** (When indicated)  
Bird Screen - 1/2" square mesh, 19 GA. galvanized steel, on interior.**INSULATION:** Underside of roof is lined with 1/2" thick insulation.**NOTES:** Penthouse dimensions "A" or "B" exceeding 84" shall be shipped in sections for field assembly by others.

<b>Item #</b>	<b>Qty</b>	<b>A</b>	<b>B</b>	<b>C</b>	<b>D</b>	<b>H</b>	<b>Mullion</b>	<b>Type</b>	<b>Location</b>			
<b>Penthouse Dimensions</b>								<b>Screens</b>				<b>Union Made</b>
<b>Arch. / Eng. :</b>						<b>EDR:</b>		<b>ECN:</b>		<b>Job:</b>		
<b>Contractor:</b>												
<b>Project:</b>						<b>Date:</b>		<b>DWN:</b>		<b>DWG:</b>		

In the interest of product development, Louvers &amp; Dampers reserves the right to make changes without notice.

www.louvers-dampers.com

450 Riverside Drive • Wyalusing PA, 18853 • Phone 570-746-1888 • Fax 570-746-9286

**Exterior Fastening Installation**

Continuous angle at the four corners and intermediate as required.

**SPECIFICATIONS****MATERIAL:** .081" thick (nominal) or .125" thick (nominal) extruded aluminum, 6063-T52/T6 alloy, with reinforcing rib bosses.**ROOF:** .060" thick (nominal) sheet aluminum removable roof, reinforced with aluminum bracing where required to take a snow load of 40 lbs./sq.ft., plus a required safety factor.**SCREENS:** (When indicated)  
Bird Screen - ½" square mesh, 19 GA. galvanized steel, on interior.**INSULATION:** Underside of roof is lined with ½" thick insulation.**NOTES:** Penthouse dimensions "A" or "B" exceeding 84" shall be shipped in sections for field assembly by others.

<b>Item #</b>	<b>Qty</b>	<b>A</b>	<b>B</b>	<b>C</b>	<b>D</b>	<b>H</b>	<b>Mullion</b>	<b>Type</b>	<b>Location</b>	
<b>Penthouse Dimensions</b>								<b>Screens</b>		<b>Union Made</b>
<b>Arch. / Eng. :</b>						<b>EDR:</b>		<b>ECN:</b>		<b>Job:</b>
<b>Contractor:</b>										
<b>Project:</b>						<b>Date:</b>		<b>DWN:</b>		<b>DWG:</b>